



The Tyler / Smith County VOTER

April-May 2010

Monday, April 19, 7 pm
Candidate Forum
Plyler Instructional
Complex
807 West Glenwood

Forum Features Contested City, TISD, TJC Races

League of Women Voters Mission

The League of Women Voters is a nonpartisan organization that works to promote political responsibility through informed participation of all citizens in their government. The League does not support or oppose any political party or any candidate. It publishes factual information to help prepare citizens to cast informed votes. The League does take action on selected governmental issues that members have studied.

In preparation for elections scheduled for May 8, the League will hold a candidate forum beginning at 7 p.m. April 19 in the Plyler Instructional Complex, 807 West Glenwood.

City Council District 6 is a three-candidate race among **Kara Hodges Camp**, **Kevin Halbert**, and **Jason Wright**. Current City Council members filing unopposed include Barbara Bass, Mayor; Donald Sanders, District 2; Martin Heines, District 4.

Therelee Washington, TISD board member representing District 3, is challenged by **Howard Heggins**. Unopposed on the TISD ballot are **Eleno Licea**, District 1, and **Mi-**

chelle Carr, District 6.

No opposition surfaced to challenge **Peggy Wagstaff Smith** in TJC Place 1, **Clint Roxburgh** in Place 2 or **Dr. Joe Prud'homme** in Place 3. However, all unopposed candidates in these three races are invited to attend to "meet and greet" their constituents attending the forum.



Roger Gray

Well-known local journalist Roger Gray serves as moderator for this event. Posing questions to the candidates are panel members UT-Tyler Journalism instructor Vanessa Curry, LWV President

Kristi Roberts, and Tyler *Morning Telegraph* Editor Roy Maynard.

Candidates also will field questions submitted from the audience.

All members are urged to attend to learn more about the candidates and to support one of the League's most vital activities.

See Election Calendar page 6



Vanessa Curry



Kristi Roberts



Roy Maynard

PATH Director to Speak at LWV Annual Meeting May 15



Christina Fulsom

Saturday, May 15, League members have a great opportunity for fellowship, good food and atmosphere, and a stimulating speaker, as we meet to consider and approve plans for the next League year. **PATH Director Cristina Fulsom** will speak about basic needs in Smith County, providing background for Phase 3 of our local study.

We will reflect on the past year's successes and make decisions for next year—and possibly for years to come. Members assembled for the 58th Annual Meeting of LWV-Tyler/Smith County will demonstrate de-

mocratic action as we discuss and act on the following League matters:

- Adopt a budget for 2010-2011
- Elect the board of directors for 2010-2011
- Re-adopt positions on local program issues
- Hear reports of the year's activities

On pages 4-5 of this *VOTER* are the proposed budgets, slate of nominees, and local Program. Study all of these carefully in order to be able to vote on your organization's business.

League President Kristi Roberts urges each of us to be in touch with other League members to encourage them to come for this important event.

Saturday, May 15
10 am—1:30 pm
Villa Montez Restaurant
3324 Spur 124, Tyler

The annual meeting also is an excellent time to invite someone you have been hoping will join the League. Bring family or friends for a great morning mixing business with pleasure.

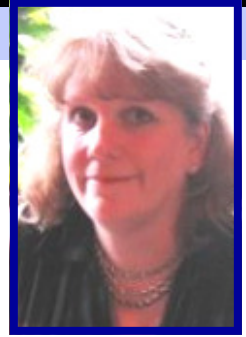
Please come at 9:45 am so you can order your lunch before the meeting starts. Get a head start by deciding what you want before you arrive by checking out the menu at www.villamontez.com

For information on the business of annual meeting, see pp. 4-5.



President's Podium

Kristi C. Roberts, President



Our local League has been very busy lately, and I hope that all our members have been involved in these activities. We kicked off the busy election season with a candidate forum in February. We had 6 candidates present with 3 panel members asking the tough questions. Thanks to our Voter Service VP Shirley Hightower for organizing this event. Another forum is coming up in April, and I encourage everyone to attend and learn more about candidates.

Our end of the year meeting is just around the corner.

Those of you who missed our 90th Birthday celebration really missed a great night out! Local candidates and elected officials joined us at the Law offices of Roberts & Roberts for champagne and chocolate. Thank you to all our board members who supplied all the great treats and to one of our new

members, Linda Sharp, for helping to organize the event.

Many thanks also go out to our Organization VP Hattie Moreland who has been busy recruiting new members. I want to extend a big welcome to our new members Linda Sharp, Kara Camp, Melissa Crowe, and Amy Thrasher. Make it a point to attend LWV events and bring a friend to help our organization grow.

There is a lot going on in the news right now with the passage of the health care bill. As League members we especially need to familiarize ourselves with the details on this major piece of legislation and be prepared to offer intelligent discussion about what it all means. This is *the* hot topic right now, and we need to know the facts.

This year has really flown by and our end of the year meeting is just around the corner. Our Meeting Basic

Human Needs committee has been busy making plans and re-searching the issues.

Be sure to mark your calendars for Saturday, May 15 for annual business meeting. Christina Fulsom, Director of PATH, will be our guest speaker. She will talk with us about what is being done in Tyler and Smith County to meet the basic human needs of our residents. Don't miss this great time to spend the day with other members, discuss the issues, and begin planning for another great year with LWV.



Kristi

Final Session of Great Decisions to Focus on Special Envoys

April 7—Special Envoys Dr. Daniel Murphree Assistant Professor of History, UT Tyler

Dr. Dan Murphree will lead the final session of the Great Decisions foreign policy series on April 7, speaking on Special Envoys in U.S. diplomatic interactions. Murphree received his Ph.D. in American History from Florida State University in 2001. He is currently Assistant Professor of History at the University of Texas at Tyler where he teaches courses on Early North America, Native Americans, and Latin America.



Special envoys can help bring attention and diplomatic muscle to resolve conflicts and global challenges but they also bring with them their own "special" problems. Will the Obama administration's reliance on special envoys increase the ability of the U.S. to deal with major international issues or complicate our diplomatic options?



Great Decisions is sponsored by the League, AAUW Tyler, and the Tyler Public Library. Discussion sessions are open to the public and are in the Tyler Library auditorium, 201 South College Avenue.

Add These New Members to Your Member Handbook & Directory

Melissa Crowe (0211)
709 S. Broadway #4 Tyler TX 75701
940-867-7021(c) melissa.crowe@gmail.com

Kara Camp (0211)
606 Cumberland Tyler TX 75703
581-8660 (h) 520-2112 (c)
tylercamps@msn.com

Linda R. Sharp (1210)
513 Hyde Park Tyler TX 75701
526-3848 linda15262000@yahoo.com

Amy Thrasher (0211)
1206 Hilltop Run, Lindale, Tx 75771
903 780 0392 (c) akthrasher@hotmail.com

Interested in Libraries?

One League member has shown an interest in organizing a campaign to call for more support for public libraries. If you are interested in this advocacy project, you can make a real difference.

You will get special training in successful advocacy strategies and methods.

To help, contact Dee Brock at deebrook@faqspress.com or 903-565-6655.



New Member Spotlight – Hattie Moreland, Organization VP

LINDA SHARP

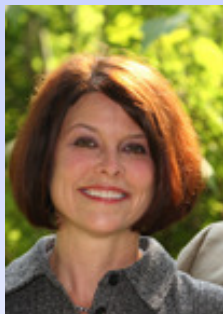
states “I joined the League of Women Voters in order to become more involved politically in an unbiased way in my community.”

Sharp received a B.S. Degree from Corpus Christi University, which is now Texas A&M Corpus Christi, in 1984. Linda says that her career has been as a homemaker, although she has worked part-time for short periods in retail.



Welcome also new LWV members Kara Camp and Melissa Crowe, and welcome back returning member Amy Thrasher. These new members are rapidly becoming active and involved.

Kara Camp is a retired pharmacist who is a candidate for Tyler City Council District 6. She has served on the Tyler Library Board and has long been a community organizer and activist, especially in neighborhood preservation and with Historic Tyler. She also has worked with Meals on Wheels, Literacy Council of Tyler, Women’s Symphony League, and Association for Retarded Citizens.



headquarters. She previously served on the LWV-Tyler board and has agreed to serve again in 2010-11 as a Director. Her chief interests are with policy issues and voters service.

Melissa Crowe is a relative newcomer to Tyler. She is a staff writer with the *Tyler Morning Telegraph*. She previously was on the Communications Team of the University of North Texas Office of Sustainability, served as an intern at the *Dallas Morning News*, and was a senior staff writer at the *North Texas Daily*. Melissa is interested in environmental issues and has consented to serve on the LWV-Tyler/Smith County board in 2010-11 as a Director.



Hattie Moreland
Organization VP



Photo by Jaime Carrero

Let these new members know how glad we are to have them.



She is a certified Master Gardener and has varied interests, including library services and basic needs of the community. Hobbies include reading, piecing and quilting by machine, and fabric embellishment. Linda says that she and her husband love to travel.

She readily became active in LWV projects: Meeting Basic Needs and LWV’s 90th Anniversary Celebration. She has agreed to serve a 2-year term as Organization Vice President.



Amy Thrasher, no novice in the League, has worked for both the LWVUS and LWV-Texas

LWV-Tyler Diversity Policy

The League of Women Voters of Tyler/Smith County, in both its values and practices, affirms its belief and commitment to diversity and pluralism, which means that there shall be no barriers to participation in any activity of the LWV-Tyler on the basis of gender, race, creed, age, sexual orientation, national origin, or disability.

The LWV-Tyler/Smith County recognizes that diverse perspectives are important and necessary for responsible and representative decision making. LWV-Tyler/Smith County subscribes to the belief that diversity and pluralism are fundamental to the values it upholds and that this inclusiveness enhances the organization’s ability to respond more effectively to changing conditions and needs. LWV-Tyler/Smith County affirms its commitment to reflecting the diversity of Americans in its board and programs.

Member Dues Reminder

The following members are due in March, April, & May.

March Sarah Early	May Fran King Tim Crouch Linda Hoak Sunshine Knowles
April Scherel Carver Sue Barham Steve Lander Toni Ferrell Maggie Haas Bonnie Hardaway Roy Stanley	Overdue Karen Wilkerson Risa Hildeton Diane Karlsson Betty Tirey

Thanks for your prompt response

To Join the League:

The League of Women Voters is where hands-on work to safeguard democracy leads to civic improvement. Join LWV, where leaders are actively engaged in effecting change at the local, state, and national levels.

SEND CHECK TO:

P.O. Box 6271
TYLER, TX 75711

\$60 INDIVIDUAL

\$90 TWO IN SAME HOUSEHOLD

\$25 STUDENT

Nominations Are Now in Order

Officers, Directors Nominated for 2010-2011

Meeting recently during an unexpected snowstorm, but conducting their work in earnest by telephone and Internet to secure an engaged leadership team for the League of Women Voters, the 2010 nominating committee is pleased to submit the following slate to serve on the 2010-2011 LWV-Tyler/Smith County Board of Directors. Two of the nominees have agreed to serve one-year terms for Directors who were unable to complete their 2009-2011 terms.

Members present at the annual meeting on May 15 will vote on the election of this leadership slate. Nominations may be made from the floor by any voting member, provided that the consent of the nominee has been secured. Under LWV-Tyler bylaws, the new board may appoint five additional directors to serve one-year terms.

Board of Directors

Program Vice President, 2010-2012	Pam Reeves
Organization Vice President, 2010-2012	Linda Sharp
Treasurer, 2010-2012	Scherel Carver
Director, 2010-2012	Amy Thrasher
Director, 2010-2012	Gail Rutledge
Director, 2009-2011*	Linda Hoak
Director, 2009-2011*	Melissa Crowe

Nominating Committee 2010-11

Nominating Committee Chair	Karen Wilkerson
Nominating Committee Member	Doris Stanley
Nominating Committee Member	Sue Barham

** completing unexpired term*

Submitted by the 2010 Nominating Committee:

Chair Karen Wilkerson, Sue Barham, Doris Stanley, Scherel Carver, and Pam Reeves

If you know any of these members who have volunteered to share their time and expertise to sustain the League's work in Tyler and Smith County, please express your personal thanks to them. It is said that many hands make light work, and this is especially true of the hands of women who are committed to service.

Karen Wilkerson, Nominating Committee Chair

Continuing on the LWV-Tyler/Smith County Board of Directors through 2011

President	2009-2011	Kristi Roberts
Community Relations VP	2009-2011	Dee Brock
Voters Service VP	2009-2011	Shirley Hightower
Secretary	2009-2011	Andie Rathbone
Director	2009-2011	LouAnne Smoot

Board Recommends Phase 3 of Study of Basic Needs, Retaining Other Program Issues Positions



**Pam Reeves
Program VP**

Recommendation At the May 15 annual meeting members will vote on whether to retain current LWV-TSC positions on **Library Services, Single-Member Districts, and Human Resources**. Based on input from members at the January "Keep the Grass Roots Green" meeting, the Board of Directors recommend that all current local Program positions be *retained without change*. They also recommend that members approve a Phase 3 of the study of Meeting Basis Human Needs (MBHN).



Background Members of the MBHN study committee met several times in fall and winter to consider appropriate design for a community-wide review of prevalent problems experienced by our residents. Early on, the project involved partnering with the United Way of Tyler/Smith County, which recognizes the need for current information as a component part of their funding decisions.

The committee has reviewed prior studies of this type that were conducted by the League of Women Voters and the United Way, most of them top-down designs based heavily upon survey responses from local service providers, philanthropic donors, and community leaders.

Proposed Phase 3 Members of the MBHN study group have outlined a more expansive study, one primarily based on random in-depth surveys conducted in the broader community, combined with input from key service providers and examination of concurrent data they have compiled. The inclusion of some focus-group information from known underserved or isolated populations is also under consideration.

To date, some 70 partner agencies and service providers have been identified by the MBHN committee as potential co-participants and data sources for the study. The MBHN team also hopes to involve professional research staff from area universities and colleges to assist in the design, compilation, and analysis of the study data in order to provide a quality instrument that will serve to guide future development of services to meet needs of underserved residents in the region. Karen Wilkerson, MBHN Study

Current members of the MBHN study committee are **Karen Wilkerson, Risa Hildaton, Mary Claire Rowe, Vecky Elliott, Toni Ferrell, and Andie Rathbone**. Others wanting to assist in this study should contact **Pam Reeves** at phreeves1@att.net or Karen Wilkerson at **dkwilkerson@hotmail.com**

Members to Consider 2010-2011 Budgets at Annual Meeting

LWV-Tyler/Smith County FY 2010-2011		
INCOME		
	Grant-Program #1	1000.00
	Grant-Program #2	200.00
	Grant-Commun. Rel. A	1000.00
	Dues	2625.00
	Interest	50.00
	In-Kind CR	300.00
	Donations-General	3140.00
	Total INCOME	8315.00
EXPENSES		
Member Dues	National member dues	643.00
	State member dues	484.00
	Total Member Dues	1127.00
Meetings, Conventions	Annual mtg supps/ speaker	200.00
	National Convention 2010	300.00
	State Convention	0.00
	Workshops	400.00
	Tot Meetings, Convs.	900.00
Voters Service	Debates, forum, voter regis	150.00
	Educational Publications	100.00
	Total Voters Service	250.00
Community Relations	CR Grant Project A	1000.00
	Public relations	100.00
	Financial development	200.00
	In-Kind publicity	300.00
	Web site IPS fee	150.00
	Tot Commun Relatns	1750.00
Program	Action/Advocacy	100.00
	Great Decisions	75.00
	Observer Corps	100.00
	Library Servs SALT	100.00
	Program-General	100.00
	Program-Handouts	100.00
	Publications Purchased	100.00
	LWVUS Program Proj #1	1000.00
	LWVUS ProgramProj #2	200.00
	Total Program	1875.00
Organization	Records preservation	50.00
	Print VOTER	600.00
	Mail VOTER	125.00
	Membership	200.00
	Mail to members	75.00
	TOTAL Organization	1050.00
Administrative	Bank fee	20.00
	Board tools	60.00
	Board training	100.00
	Chamber dues	125.00
	PO Box, Bulk Mail Permit	218.00
	Supplies, postage	100.00
	Telephone	240.00
	Total Administrative	863.00
	Total EXPENSES	7815.00
	To Reserves	500.00
	Total Outlay	8315.00

LWV-TEF FY 2010-2011		
INCOME		
Restricted: Voters Service	Voter Service - YEOs	250.00
	State Voters Guide	300.00
	VS - Debates, forums	200.00
Restricted: Commun. Relations	Commun Rel. Proj B	500.00
	CR Special Project C	500.00
	Citizen Info Proj Prog #3	500.00
Restricted: Program	Program [Publication] #4	500.00
	Program-Study/Project	1000.00
Sub-Tot.	Restricted -	3750.00
	Donations-General	1877.00
	Total TEF Income	5627.00
EXPENSES		
Member Dues	National member dues	643.00
	State member dues	484.00
	Total Member Dues	1127.00
Meetings, Conventions	National Convention 2010	500.00
	State convention	0.00
	Total Meetings	500.00
Voters Service	Educational pubns	250.00
	Debates, forums	200.00
	State Voters Guides	300.00
	Mail Ed. Publications	100.00
	Total Voters Service	850.00
Community Relations	Financial development	100.00
	CR Special Project B	500.00
	Special CR Project C	500.00
	Tot. Commun. Relatns	1100.00
Program	Citizen Info Prog proj #3	500.00
	Program Project #4	500.00
	Study or Campaign	1000.00
	Publications purchased	50.00
	Total Program	2050.00
	Total TEF Expenses	5627.00

Budget Committee:
Katheryn Hetherly, Chair
Andie Rathbone, Pam Reeves,
Dee Brock, Shirley Hightower
(Ex-Officio Scherel Carver, Treasurer)



The LWV-TSC board recommends these budgets for the 2010-11 fiscal year. Figures proposed account for both tax-deductible LWV Texas Education Fund (LWV-TEF) and general funds (LWV-Tyler/Smith County).

The two budgets total \$13942. If adopted, the budgets also would require some \$5000 in general fund raising from foundation grants and the community.

Grant Projects: Based on past experience with LWVUS pass-through grants being offered with little advance notice, the board budgets for several potential grant-funded projects each year. These undefined projects are labeled #1 and #2, etc.

Dues: In a grassroots organization like the League, members are a part of all three levels. The LWV-Tyler board recommends no increase in dues, although the state and national rates may increase.

The budget committee anticipates adoption of Phase 3 of the study of Meeting Basic Human Needs and publication of a *Facts & Issues* background paper on the topic.

The proposed budget supports attendance at leadership seminars and meetings, as well as one delegate to the 2010 LWVUS Convention.

The Budget Committee's chief goal is to recommend adequate funds for the new board to achieve its goals.



Shirley Hightower

Naturalization Ceremony Held in February



Local League members were present on February 17 in Judge Judith Guthrie's court as 77 new citizens from 24 different countries recited their oaths of allegiance to the United States.

LWV board member **Vecky Elliott** delivered an inspirational speech during the morning session and **Shirley Hightower** spoke encouragingly in the afternoon. Both speakers urged the new citizens to fully exercise their new status by registering to vote. A total of 40 of the immigrants chose to do so and several others took registration forms with them to be completed later. Assisting with this activity were League members **Andie Rathbone, Linda Sharp, Lou Ann Smoot, and Betty Tirey.**



This is one of the most inspirational events in which we participate and Shirley urges every member to attend at least once. She would also welcome assistance with the registration and distribution of voter information. The next ceremony will likely occur in 2-3 months—please say “yes” when she calls you to help.



Please notify Shirley Hightower if you can participate.
Call 903-561-7450
or email to
eshightower@suddenlink.net

Candidate Forum a Success

On February 15 the League held a candidate forum in the TISD Board Room. Sixty-one voters listened as eight candidates vying for spots on Smith County commissioners court, 241st District Judge, and County Clerk spoke and answered questions from a three-member panel and the audience. Additionally, two candidates for seats in the Texas Senate and House were available for “meet and greet.” Roger Gray moderated and UT journalism teacher Vanessa Curry, Roy Maynard of the *Tyler Morning Telegraph*, and LWV-Tyler/Smith County President Kristi Roberts posed questions to the candidates.

Thanks to League members Scherel Carver, Toni Ferrell, Hattie Moreland, Andie Rathbone, Lou Ann Smoot, and Amy Thrasher for their assistance with this event.



Calendar for May 8, 2010 Local Elections

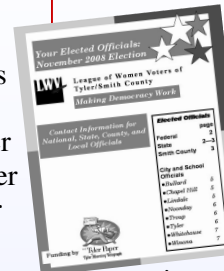
- Mar. 1**—First Day to Apply for Ballot by Mail
- Mar. 4**—Last Day to File for Place on Ballot
- April 8**—Last Day to Register to Vote
- April 26-May 4**—Early Voting
- April 30**—Last Day Application for Ballot by Mail May Be Received.
- May 8**—Election Day

Voter Registration Cards Improved, Redesigned

The Texas voter registration card has been redesigned and improved, and both the local Elections Clerk and the Secretary of State advise registrars to recycle or discard any old cards we may still have.

Your Elected Officials: May 2010

Available Mid-May



The latest up-to-date edition of *Your Elected Officials*, including

officials elected in the May 8, 2010 election, will be available in mid-May. This newest edition, which includes officials for **Arp** and **Hideaway**, is a basic resource that includes information about national, state, and county officials, as well as those of all cities and school districts in Smith County. For each official, it includes office addresses, email, and phone numbers. Use this information to contact your elected officials to let them know your opinions.

The brochure also can be a valuable tool for the community. If you know of a group that could use this brochure, contact a member of the LWV-Tyler/Smith County board.

Or download a copy at lwvtyler.org

Go to lwvtyler.org

Watch the LWV-Tyler/Smith County web site for updates on LWV activities and ways that you can be a grass-roots advocate.



Community Relations News Dee Brock Community Relations VP



Dee Brock

Dee Brock also serves on the LWV-Texas Board of Directors and is a Trustee of the LWV-Texas

Support Your League

In this highly politicized period, the League of Women Voters is a strong nonpartisan voice of reason. You can count on your League to advocate for policies on every level—but not until after we have studied the issues thoroughly and come to an agreement about policies and actions to improve the lives of our communities, states, and nation.

Here are just three ways the League of Women Voters of Tyler/Smith County works to make democracy function better in Tyler and Smith County:

- **Help residents know more** about those seeking to become or remain our elected officials through Voters Guides, candidate forums, website information, and *Your Elected Officials* brochures;
- **Register voters** at naturalization ceremonies, on college campuses, in commercial enterprises, and at other venues and motivate them to use their votes;
- **Investigate** how well our public services take care of basic human needs of in Smith County.

As members, you know about this work because you make it happen! Please support LWV-TSC with a financial gift now and enable us to continue to educate ourselves and the community and to make our voice heard.

You can send your contribution to LWV-TSC to support our local organization or to LWV-TEF (LWV-Texas Education Fund) as a tax-deductible gift.

Mail your gift to
**P.O. Box 6271
Tyler, Texas 75711.**

90th Birthday Bash a Sweet Success



With a proclamation signed by Tyler Mayor Barbara Bass, members and guests commemorated the 90th anniversary of the founding of the League of Women Voters, recognized as a significant occasion by all attending.

Public officials, candidates, members of the media, and other invited guests toasted with champagne and delighted in chocolate confections and cheeses at this rare event. A birthday cake adorned with an iconic suffragette coming out of cake was the highlight of the evening.

Congratulations LWV, and best wishes for the future 90 years.



Go to lwvtyler.org

Check out the LWV-TSC website for details on upcoming events, publications to download, and links to related websites, such as the Texas Secretary of State and the state and national LWV.

You can request a speaker for your organization, subscribe to the League's newsletter, make a donation, or join the League of Women Voters of Tyler/Smith County.



Call to 2010 LWV-Texas Convention, April 23-25

The biennial state convention is set for San Marcos this month, and we hope that Tyler/Smith County members, especially new board members, will take advantage of this opportunity to learn about the League and meet other members from across the state.

You may be able to attend as a delegate or as an observer. LWV-Tyler is allowed five Convention delegates, and we encourage interested members to submit a request to LWV President Kristi Roberts at kribru@aol.com or **903 245-1820**.

There also are special workshops scheduled for members on:

- Developing websites
- Public Policy or Program
- Membership & Diversity

LWV-Tyler/Smith County will be honored along with other Leagues with more than 50 years history. LWV-TSC was founded in 1952 and is rapidly approaching its 60th year.

Local Leagues also will be recognized for forging community partnerships, increasing membership numbers, finding new ways to do work of the League, and for a unique twist on an established LWV endeavor.

Give Kristi a call. She also can provide information about travel plans and hotel accommodations.



LWV Tyler/Smith
County
P. O. Box 6271
Tyler, Texas 75711

Non-Profit Org.
U.S. Postage
PAID
Permit No. 1143
Tyler, TX

Board of Directors

Kristi C. Roberts
President

Shirley Hightower
Voters Service VP

Dee Brock
Community Rel. VP

Pam Reeves
Program VP

Hattie Moreland
Organization VP

Andie Rathbone
Secretary

Scherel Carver
Treasurer

Maureen Christopherson
Publicity

Vecky Elliot
Observer Corps

Maggie Haas
Public Policy

Lou Anne Smoot
Observer Corps



www.lwvtyler.org

Your guide to the League, local government, links to information on candidates, & more.

Editor: Scherel Carver

In This Issue: Proposed Budgets, Program Positions, and Slate—pages 4-5

2010 LWV-TSC Calendar of Upcoming Events

Please Join Us!

Tuesday April 6, 11: 30 am
Board Meeting—LWV Board of Directors

Wednesday April 7
Great Decisions Foreign Policy Series
Tyler Public Library, 201 South College

April 8 Last Day to Register to Vote in May

Monday April 19, 7:00 pm
Candidate Forum
Plyer Instructional Complex 807 West Glenwood

April 23—25
LWV-Texas 2010 Convention, San Marcos

Early Voting April 26—May 4

Tuesday May 4, 11: 30 am
Board Meeting—LWV Board of Directors

Saturday, May 8—Local Elections

Saturday, May 15, 10 am—1 pm
LWV-TSC Annual Meeting
Villa Montez, 3324 Spur 124, Tyler

Tuesday June 1, Time TBA
Board Meeting—LWV Board of Directors

Members are welcome to attend meetings of the LWV Board of Directors, first Tuesdays at Roberts & Roberts, 118 West 4th Street

Inside this issue:

Forum Features Contested City, School Board, TJC Races	1
PATH Director to Speak at Annual Meeting May 15	1
President's Podium	2
Final Great Decisions Focus on Special Envoys—April 8	2
Are You Interested in Libraries?	2
New Member Addresses—Add to Directory	2
New Member Spotlight	3
Member Dues Reminder	3
Nominated for 2010-11 Board, Nominating Committee	4
Board Recommends Phase 3 of Basic Needs Study	4
Recommended 2010-11 Budgets	5
US Naturalization Ceremony Connects with New Voters	6
<i>Your Elected Officials: May 2010 Election Available Soon</i>	6
Calendar for May 8 Local Elections	6
Support Your League	7
90th LWV Birthday Bash a Sweet Success	7
Call to the 2010 LWV-Texas Convention April 23-25	7
Calendar of Activities	8